



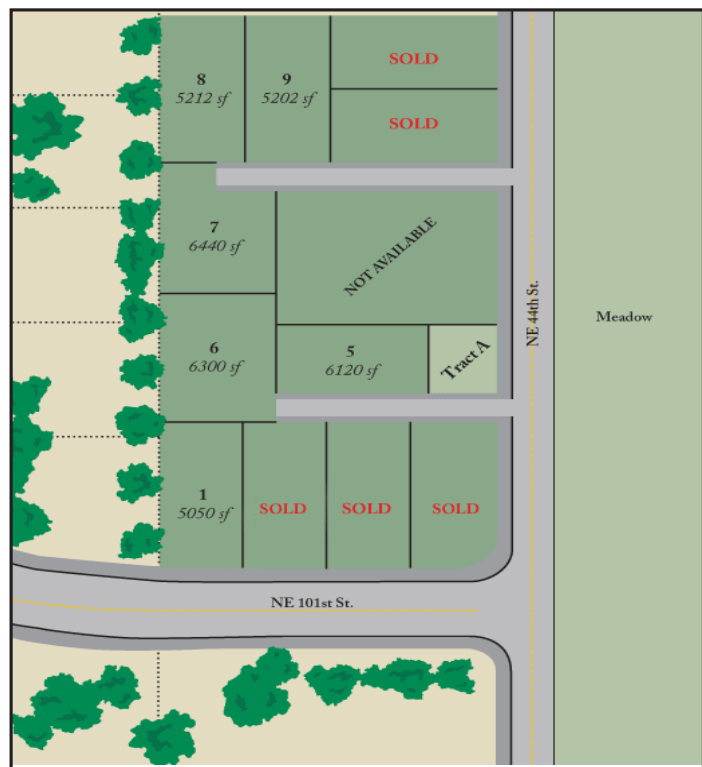
Welcomes You to Sherwood Place

Now Accepting Pre-Sales

Convenience in a pastoral setting, Sherwood Place is located across the road from the future 7.7 acre Lalonde's Park and a few minutes to I-205 and I-5, shopping, and restaurants. It's a pretty neighborhood of both new and established homes, and the peaceful feeling is accentuated by the natural beauty of the surrounding grand fir trees. You'll be glad you chose to build your new home here.



SOLD, Lot #4: 4308 NE 101st St.
Vancouver, WA 98686



Evergreen Homes NW—our homes are built to last. We start with a well-designed floor plan that makes clever use of space. This is combined with top-quality materials and the attention to detail and craftsmanship you only get from a builder who really cares. The result is a spacious home which is beautiful, durable, and a great value.

Visit us at
www.evergreenhomesnw.com

Included Features



In the interest of continuous improvement, standard features, prices and home plans may change without notice.

- Tile Countertops with Tile Backsplash
- Laminate Hardwood Entry
- Northwood Custom Alder Cabinets
- 2, 4, or 6-Panel Elite Doors
- Moen Plumbing Packages
- Designer Satin Nickel or Bronze Lighting Packages
- 14.5 SEER Heat Pump for Heating and A/C
- Ruud Tankless Hot Water Heater
- 50 Year Warranty Fiber Cement Siding
- Front Yard Landscaping with Sprinklers
- 100 sq. ft. Brushed Concrete Back Patio
- 30 Year Architectural Roof
- Energy Efficient Vinyl Windows
- Two Car Garage with Insulated Garage Door
- Designer Paint Colors
- ENERGY STAR Certified**
- ...Plus Many Others

Options available: see us for details.



Currently Building In Several
Locations Across Clark County
--Homes Starting at \$188K

Contact Tama Sundstrom
Ph: (360) 624-5145 | Fax: (360) 574-6850
Email: tama@evergreenhomesnw.com
www.EvergreenHomesNW.com